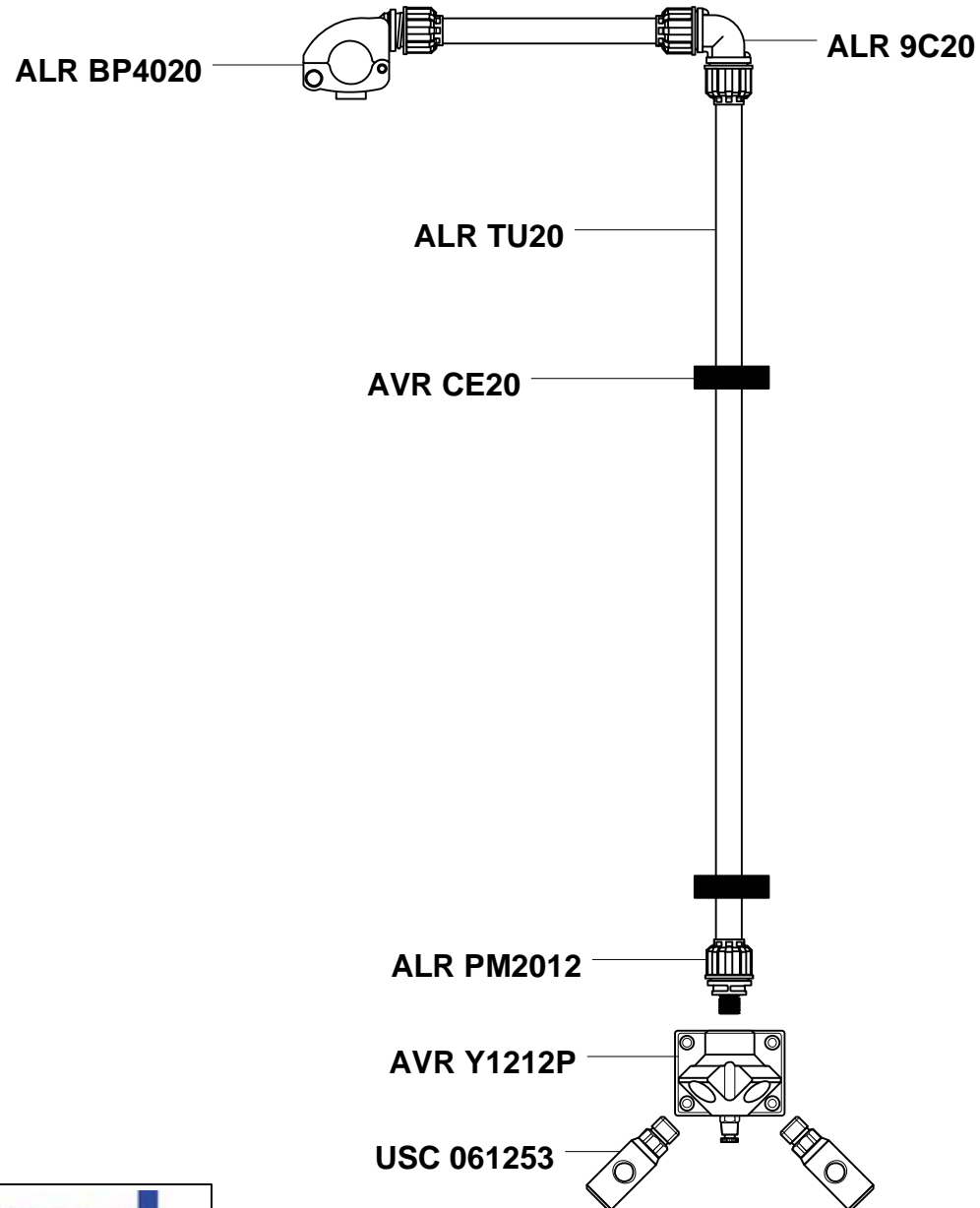
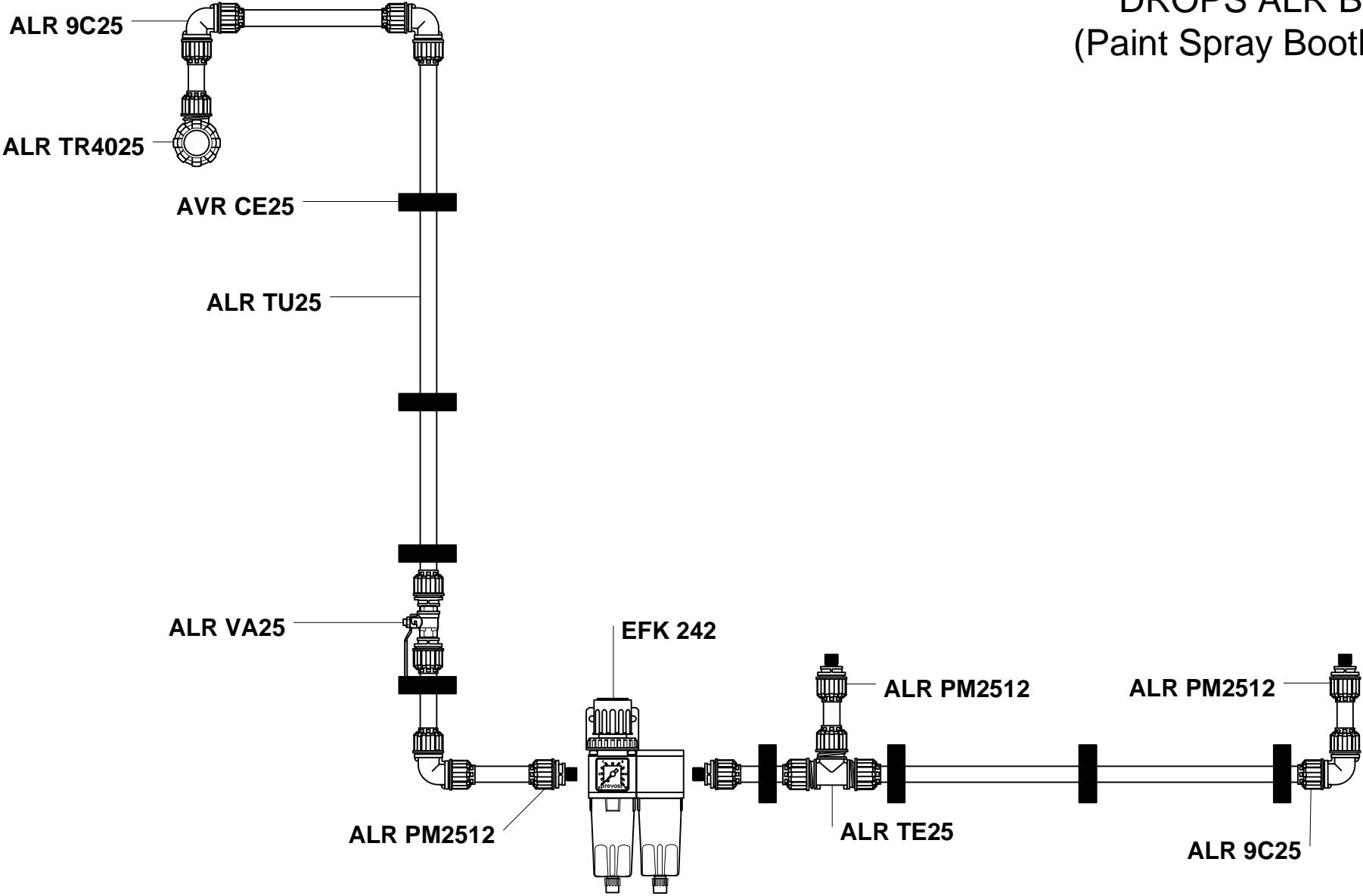


DROPS ALR A



Date :		Designed by : BERNARD BOUCHET	2/5	N° CODE	DOCUMENT	REV
Client:		Approved by :	Drawing:	Subject: Wall Mounted Air Drops	GENERAL DROPS A	Quantity Required :

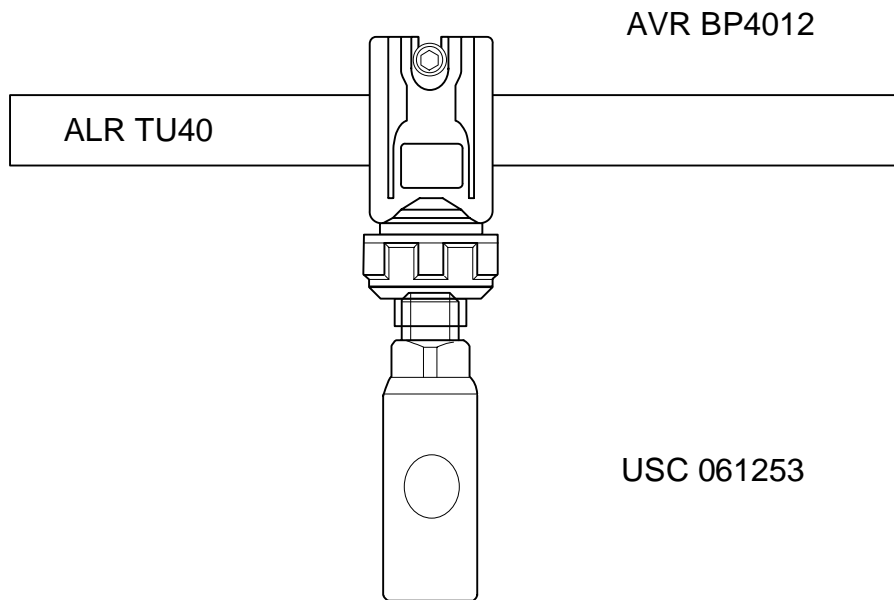
DROPS ALR B (Paint Spray Booths)



Date :		Designed by : BERNARD BOUCHET		3/5	N° CODE	DOCUMENT	REV
Client:		Approved by :		Drawing:	Subject: Standard Paint Booth Air Supply	GENERAL DROPS B	
						Quantity Required :	

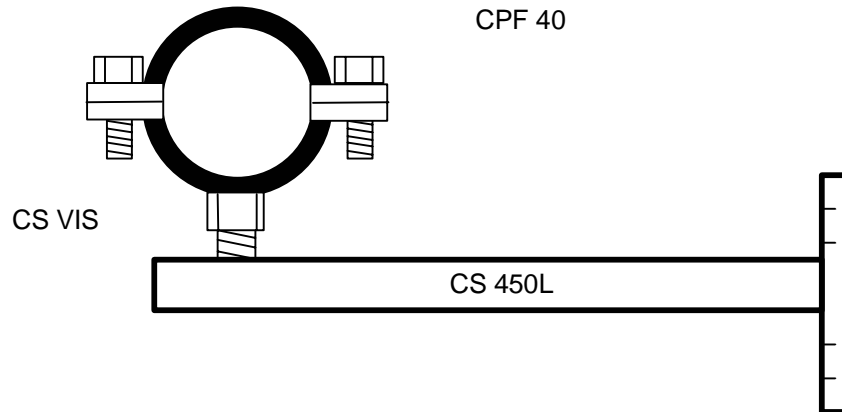
DROP CONFIGURATION FOR OPTIONAL PIPING IN MAIN PREP AREA

Main Ring ALR TU40

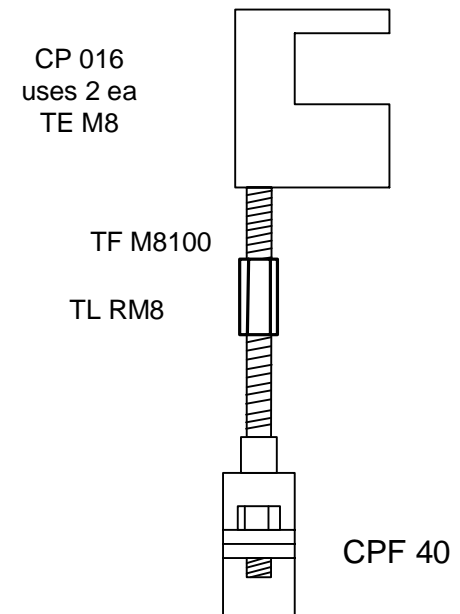


Date :	Designed by : BRAD D. WOLFORD	4/5	N° CODE	DOCUMENT	REV
Client:	Approved by :	Drawing:	Subject: Ceiling Mounted Air Drops	OPTIONAL DROPS C	Quantity Required :

WALL MOUNTING BRACKETS
70 REQUIRED



CEILING MOUNTING BRACKETS
OPTIONAL SECTION 17
REQUIRED



Date :		Designed by : BRAD D. WOLFORD		4/5	N° CODE	DOCUMENT	REV
Client:		Approved by :		Drawing:		Piping MOUNTS	
				Subject: Ceiling Mount & Wall Mount		Quantity Required :	